

HEAT&GLO™



DESIGNED | to inspire

PREMIER  
Wood-Burning Fireplaces

# TRUE MASONRY APPEAL

Turn a living area from  
casual to spectacular

Our line of clean-faced wood burning fireplaces will make their mark in stone. We've created an exclusive offering of fireplaces designed to be finished right up to the doors with your favorite stone, marble, granite or tile. The result is a classic masonry look without all the fuss.



Cover: Rutherford-50 shown with herringbone refractory and mesh screen.

Above: Exclaim-36 shown above with standard parting mesh and traditional refractory.



## PREMIER WOOD-BURNING FIREPLACES



### RUTHERFORD

The Rutherford offers an authentic masonry look. Available in 36", 42" and 50" sizes, the Rutherford is designed to be installed flush to the floor for a clean and simple look. Traditional or herringbone refractory interior panels with true masonry grout lines add to the authentic appearance. Rutherford-36 shown above with traditional refractory, mesh cabinet style doors, and Fireside Grand Oak gas log set.



### EXCLAIM

The Exclaim series offers viewing areas of magnificent proportions. With a choice of a traditional or herringbone brick interior and an elegant array of door options, our clean-faced fireplaces can turn any living area from casual to spectacular. Available in 36", 42" and 50". Exclaim-36 shown above with standard parting mesh and traditional refractory.



### NORTHSTAR

The Northstar meets the strictest environmental standards in the country, allowing you to enjoy a beautiful, roaring fire while remaining environmentally conscience. The ruggedly traditional look of the Northstar is matched by its 51,000 BTUs of heating capacity. The Northstar will warm you and your home. NorthStar-BK shown above with black cabinet style doors.



### ROYAL HEARTH

A clean face, radiant heating fireplace, the RH-36 and RH-42 will fit into any style of room. It's designed to allow facings such as tile, marble, granite or brick to come right down to the opening, providing a real masonry fireplace experience. RH-36 shown above with Fairfield mantel and green granite.

## PREMIER WOOD-BURNING FIREPLACES



### ENERGY MASTER

With our line of heat-circulating fireplaces, the heat truly is on. The Energy Master Series boast efficient high heat outputs, all encapsulated within an elegant fireplace. Available in 36" and 42" sizes, the Energy Master provides ample heat to warm up your room. Meets 2209 IRC codes with front option GGD36/ GGD42BK. EM-36 shown above with gasketed doors and Biltmore cast mantel.



### HST-42D/HST-48D SEE-THROUGH

The authentic masonry look of the See-Through wood-burning fireplace creates a magnificent view from two sides. The HST See-Through is available in two impressive viewing sizes 42" and 48" with three styles of glass doors to enhance the look and efficiency. RH-36 shown above with Fairfield mantel and green granite.



### PIER-40

The Pier-40 is a three-sided peninsula style fireplace that is perfect as a room divider. With a spectacular view of the fire from all three sides, the Pier-40 is a show-stopping multi-sided fireplace. The fully insulated firebox and optional doors make the Pier-40 energy efficient. Pier-40 shown above standard.



### BAY-40

The Bay-40 features traditional qualities while offering a unique modern design. The large viewing area of this multi-sided fireplace allows for a truly three dimensional effect of the stunning fire within. Bay-40 shown above with Polished Brass door trim.

PREMIER WOOD-BURNING FIREPLACES

DOOR OPTIONS

A variety of door options are available for the premier wood burning fireplaces. Find the doors that complement your fireplace and your homes style.



Glass Bi-Fold Doors  
Available in Black or Bronze for Rutherford models only.



Mesh Cabinet Style Doors  
Available in Black or Bronze for Rutherford models only.



Grand Vista Doors  
Available in Black or Bronze for Exclaim and Energy Master models only.



Contour Doors  
Available in Black or Bronze for Exclaim and Energy Master models only.

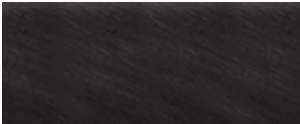


DM Bi-Fold Glass Doors  
Available with Black, Polished Brass or Stainless Steel trim. Not available for Rutherford models.



Gasketed Glass Doors  
Available in Black for Energy Master models only.

FINISHES



Black



Bronze



Polished Brass



Stainless Steel

INTERIOR OPTIONS

Rutherford and Exclaim models come with your choice of traditional or herringbone refractories. Rutherford panels shown below.



Traditional



Herringbone

NORTHSTAR OPTIONAL TRIM

Brushed Nickel trim is available as a stylish option for the Northstar.

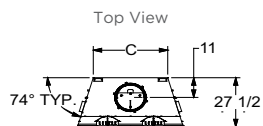


Northstar shown with optional Brushed Nickel trim.

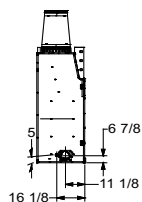
## RUTHERFORD SPECIFICATIONS

| MODEL         | FRONT WIDTH |         | BACK WIDTH |         | HEIGHT |         | DEPTH  |         | VIEWING AREA |
|---------------|-------------|---------|------------|---------|--------|---------|--------|---------|--------------|
|               | UNIT        | FRAMING | UNIT       | FRAMING | UNIT   | FRAMING | UNIT   | FRAMING |              |
| RUTHERFORD-36 | 46-7/8      | 47-7/8  | 31-1/8     | 47-7/8  | 74-1/8 | 74-1/4  | 27-1/2 | 28-1/2  | 36 x 38      |
| RUTHERFORD-42 | 52-7/8      | 53-7/8  | 37-1/8     | 53-7/8  | 74-1/8 | 74-1/2  | 27-1/2 | 28-3/8  | 42 x 38      |
| RUTHERFORD-50 | 60-7/8      | 61-7/8  | 45-1/8     | 61-7/8  | 74-1/8 | 74-1/2  | 27-1/2 | 28-3/8  | 50 x 38      |

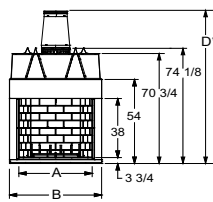
Drawings below represent the Rutherford 36, 42, & 50 combined.



Right Side View



Front View



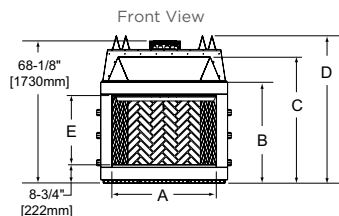
| MODEL         | A  | B      | C      | D       |
|---------------|----|--------|--------|---------|
| RUTHERFORD-36 | 36 | 46-7/8 | 31-1/8 | N/A     |
| RUTHERFORD-42 | 42 | 52-7/8 | 37-1/8 | 97-1/2* |
| RUTHERFORD-50 | 50 | 60-7/8 | 45-1/8 | N/A     |

\*Transition piece included on Rutherford 42 only

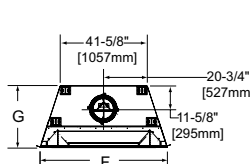
## EXCLAIM SPECIFICATIONS

| MODEL      | FRONT WIDTH |         | BACK WIDTH |         | FRONT HEIGHT |         | REAR HEIGHT |         | DEPTH  |         | VIEWING AREA |
|------------|-------------|---------|------------|---------|--------------|---------|-------------|---------|--------|---------|--------------|
|            | UNIT        | FRAMING | UNIT       | FRAMING | UNIT         | FRAMING | UNIT        | FRAMING | UNIT   | FRAMING |              |
| EXCLAIM-36 | 44-1/2      | 45-1/2  | 28-5/8     | 45-1/2  | 49-5/8       | 49-3/4  | 59-1/4      | 60      | 27-1/2 | 28      | 36 x 28-1/2  |
| EXCLAIM-42 | 50-1/2      | 51-1/2  | 34-1/2     | 51-1/2  | 49-5/8       | 49-3/4  | 59-1/4      | 60      | 27-1/2 | 28      | 42 x 28-1/2  |
| EXCLAIM-50 | 60-5/8      | 61-5/8  | 41-5/8     | 61-5/8  | 60-1/4       | 61      | 60-1/4      | 61      | 29-1/2 | 30-3/8  | 50 x 33      |

Drawings below represent the Exclaim 36, 42, & 50 combined.



Top View



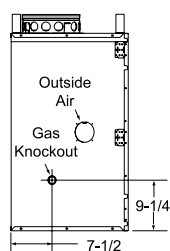
| MODEL      | A  | B      | C      | D      | E      | F      | G      |
|------------|----|--------|--------|--------|--------|--------|--------|
| EXCLAIM 36 | 36 | 43-1/8 | 49-5/8 | 59-1/4 | 28-1/2 | 44-1/2 | 27-1/2 |
| EXCLAIM 42 | 42 | 43-1/8 | 49-5/8 | 59-1/4 | 28-1/2 | 50-1/2 | 27-1/2 |
| EXCLAIM 50 | 50 | 48-3/8 | 60-1/4 | 70-1/2 | 33     | 60-5/8 | 29-1/2 |

## ROYAL HEARTH SPECIFICATIONS

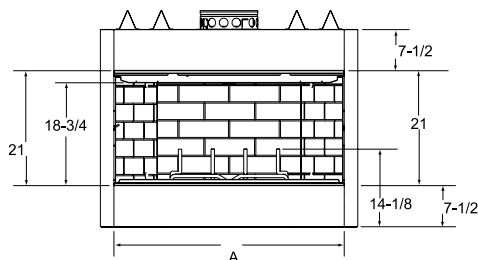
| MODEL | FRONT WIDTH |         | BACK WIDTH |         | HEIGHT |         | DEPTH  |         | VIEWING AREA |
|-------|-------------|---------|------------|---------|--------|---------|--------|---------|--------------|
|       | UNIT        | FRAMING | UNIT       | FRAMING | UNIT   | FRAMING | UNIT   | FRAMING |              |
| RH-36 | 41          | 42      | 23-3/4     | 42      | 39-1/2 | 40-1/4  | 21-3/8 | 21-1/2  | 21 x 36      |
| RH-42 | 47          | 48      | 29-3/4     | 48      | 39-1/2 | 40-1/4  | 21-3/8 | 21-1/2  | 21 x 42      |

Drawings below represent the RH-36 and RH-42 combined.

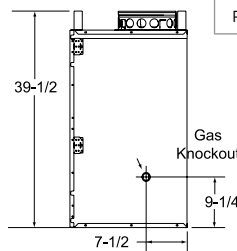
Left Side View



Front View

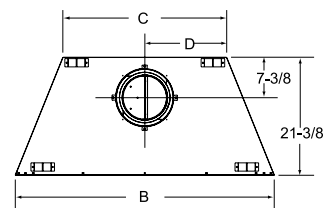


Right Side View



| MODEL | A  | B  | C      | D      | E  |
|-------|----|----|--------|--------|----|
| RH-36 | 36 | 41 | 23-3/4 | 11-7/8 | 42 |
| RH-42 | 42 | 47 | 29-3/4 | 14-7/8 | 48 |

Top View



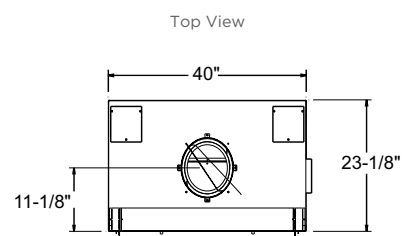
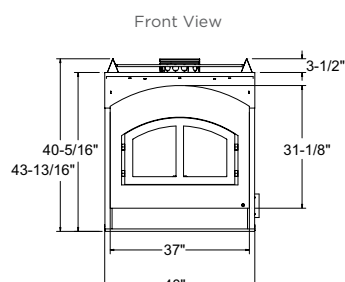
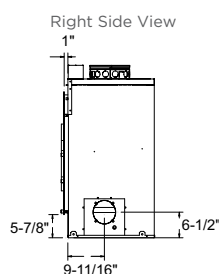
Dimensions above are in inches. Reference dimensions only. We recommend measuring individual units at installation. Assumes the use of 1/2" Sheetrock. NOTE: Non-combustible material is allowed over this dimension. Make sure you do NOT cover the decorative door opening.

Refer to installation manual for detailed specifications on installing this product. Heat & Glo reserves the right to update units periodically. Actual product appearance, including flame, may differ from product images.



## NORTH STAR SPECIFICATIONS

| MODEL       | FRONT WIDTH |         | BACK WIDTH |         | FRONT HEIGHT |         | REAR HEIGHT |         | DEPTH  |         | VIEWING AREA |
|-------------|-------------|---------|------------|---------|--------------|---------|-------------|---------|--------|---------|--------------|
|             | Unit        | Framing | Unit       | Framing | Unit         | Framing | Unit        | Framing | Unit   | Framing |              |
| North Star* | 40          | 42      | 40         | 42      | 43-13/16     | 43-7/8  | 43-13/16    | 43-7/8  | 23-1/8 | 24      | 272 sq. in.  |

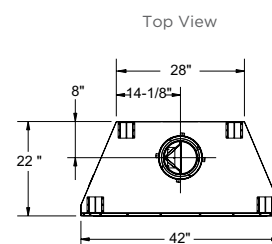
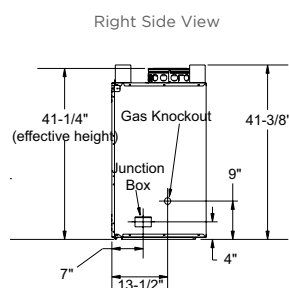
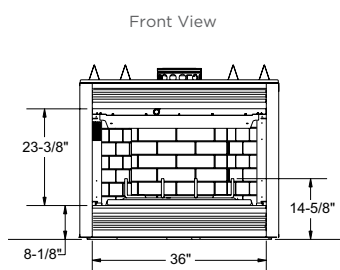
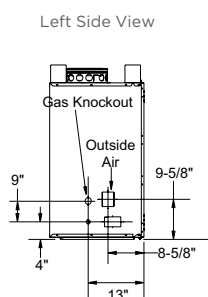


\*Tested to EPA Phase II Standards, the North Star fireplace meets the strictest environmental standards for woodburning fireplaces and can be used in areas where conventional woodburning appliances are restricted or banned.

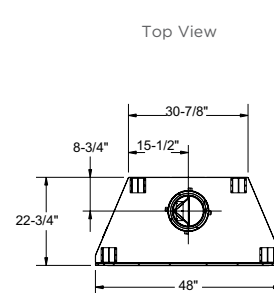
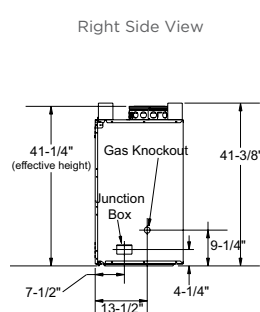
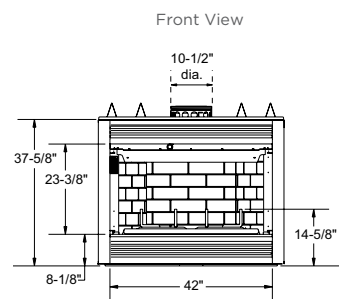
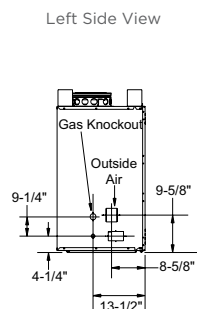
## ENERGY MASTER SPECIFICATIONS

| MODEL   | FRONT WIDTH |         | BACK WIDTH |         | FRONT HEIGHT |         | REAR HEIGHT |         | DEPTH  |         | VIEWING AREA |
|---------|-------------|---------|------------|---------|--------------|---------|-------------|---------|--------|---------|--------------|
|         | UNIT        | FRAMING | UNIT       | FRAMING | UNIT         | FRAMING | UNIT        | FRAMING | UNIT   | FRAMING |              |
| EM-415  | 42          | 43      | 28-1/4     | 43      | 41-3/8       | 41-1/2  | 41-3/8      | 41-1/2  | 22     | 23      | 36 x 23-1/2  |
| EM-485T | 48          | 49      | 30-7/8     | 49      | 41-3/8       | 41-7/8  | 41-3/8      | 41-7/8  | 22-3/4 | 23-1/4  | 42 x 23-1/2  |

### Energy Master Model EM-415



### Energy Master Model EM-485T



Dimensions above are in inches. Reference dimensions only. We recommend measuring individual units at installation. Assumes the use of 1/2" Sheetrock. NOTE: Non-combustible material is allowed over this dimension. Make sure you do NOT cover the decorative door opening.

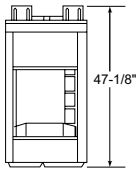
Refer to installation manual for detailed specifications on installing this product. Heat & Glo reserves the right to update units periodically. Actual product appearance, including flame, may differ from product images.

## PIER AND BAY SPECIFICATIONS

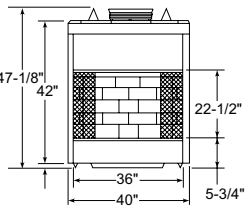
| MODEL   | FRONT WIDTH |         | BACK WIDTH |         | FRONT HEIGHT |         | REAR HEIGHT |         | DEPTH  |         | VIEWING AREA |
|---------|-------------|---------|------------|---------|--------------|---------|-------------|---------|--------|---------|--------------|
|         | UNIT        | FRAMING | UNIT       | FRAMING | UNIT         | FRAMING | UNIT        | FRAMING | UNIT   | FRAMING |              |
| PIER-40 | 40          | 40      | 40         | 40      | 47-1/8       | 47-5/8  | 41-3/8      | 47-5/8  | 24     | 23      | 36 X 20-7/8  |
| BAY-40  | 40          | 39      | 40         | 39      | 47-1/8       | 47-5/8  | 41-3/8      | 47-5/8  | 24-1/2 | 23-1/2  | 36 X 20-7/8  |

## Models Bay-40 and Pier-40

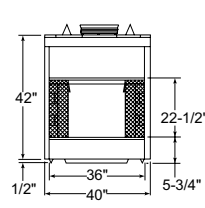
End View - Bay 40



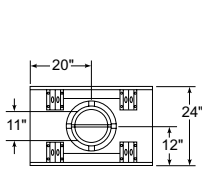
Front View - Bay 40



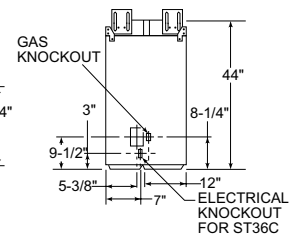
Front View - Pier 40



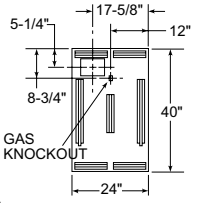
Top View - Both Models



End View - Pier 40



Bottom View - Bay 40

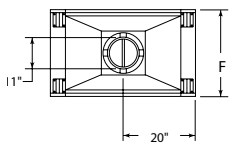


## HST SEE-THROUGH SPECIFICATIONS

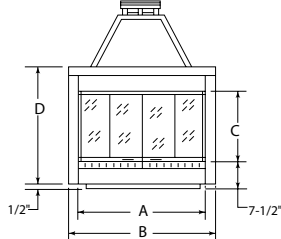
| MODEL   | FRONT WIDTH |         | BACK WIDTH |         | FRONT HEIGHT |         | REAR HEIGHT |         | DEPTH |         | VIEWING AREA |
|---------|-------------|---------|------------|---------|--------------|---------|-------------|---------|-------|---------|--------------|
|         | UNIT        | FRAMING | UNIT       | FRAMING | UNIT         | FRAMING | UNIT        | FRAMING | UNIT  | FRAMING |              |
| HST-42D | 40          | 41      | 40         | 41      | 41           | 41-1/2  | 41          | 41-1/2  | 24    | 23      | 36 X 20-1/2  |
| HST-48D | 47          | 48      | 47         | 48      | 39-1/2       | 39-3/4  | 39-1/4      | 39-3/4  | 28    | 27      | 42 X 23      |

## Models HST-42D and HST-48D

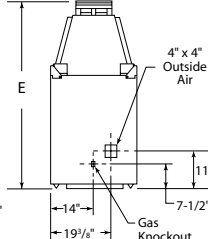
Top View



Front View



Side View



| MODEL   | DIMENSION |    |        |        |        |    |
|---------|-----------|----|--------|--------|--------|----|
|         | A         | B  | C      | D      | E      | F  |
| HST-42D | 36        | 40 | 20-7/8 | 41-1/2 | 47-1/4 | 24 |
| HST-48D | 42        | 47 | 23     | 38-1/2 | 58-7/8 | 28 |

Dimensions above are in inches. Reference dimensions only. We recommend measuring individual units at installation. Assumes the use of 1/2" Sheetrock. NOTE: Non-combustible material is allowed over this dimension. Make sure you do NOT cover the decorative door opening.

Refer to installation manual for detailed specifications on installing this product. Heat & Glo reserves the right to update units periodically. Actual product appearance, including flame, may differ from product images..

For complete information on this model,  
please contact us at:

**HEAT & GLO**

**No one builds a better fire**

A brand of Hearth & Home Technologies Inc.™

7571 215th Street West, Lakeville, MN 55044

Web: [heatnglo.com](http://heatnglo.com)

Phone: (888) 427-3973 (952) 985-6000

E-mail: [info@heatnglo.com](mailto:info@heatnglo.com)

## LIMITED LIFETIME WARRANTY\*

The strongest in the industry, Heat & Glo provides a comprehensive warranty on wood-burning products to be free from defects in materials and workmanship.



HNG-1029U-0910